

September 16, 2022

CA's Golden Opportunity: Promoting Child & Community Wellness Through Cross-Sector Expanded Learning Partnerships



CONNECT. CONVENE. INSPIRE.



You're invited to...

**California's
Golden Opportunity:
Promoting Child & Community
Wellness Through Cross-Sector
Expanded Learning
Partnerships**

**September 16, 2022
1:30pm - 3:30pm**

Registration & Convening Details!



The bottom of the invitation card features the logos for CAN (California AfterSchool Network) and YOR CALIFORNIA (California Youth Opioid Response) side-by-side.

Hosted by the
California AfterSchool Network
In Partnership with...



BOYS & GIRLS CLUBS
OF GARDEN GROVE



J.V.H. Empower



California AfterSchool Network

CONNECT. CONVENE. INSPIRE.



Glen Price Group



Why we ground



Honoring our
humanity



Biology and
neuroscience



Presence and
personal mastery

Building Community



California AfterSchool Network

CONNECT. CONVENE. INSPIRE.



Building Community

In the chat: Please share your name, organization, and location (*city & State*)

THINK: What is your connection to Expanded learning (AfterSchool) and/or Whole Child Health & Wellness?

WRITE: Please take 1 - minute to document your response.

SHARE: In your breakout room please take a 2 - minutes to introduce yourself: (Name, Organization, & Location) and your heart-minded response.



Building Community

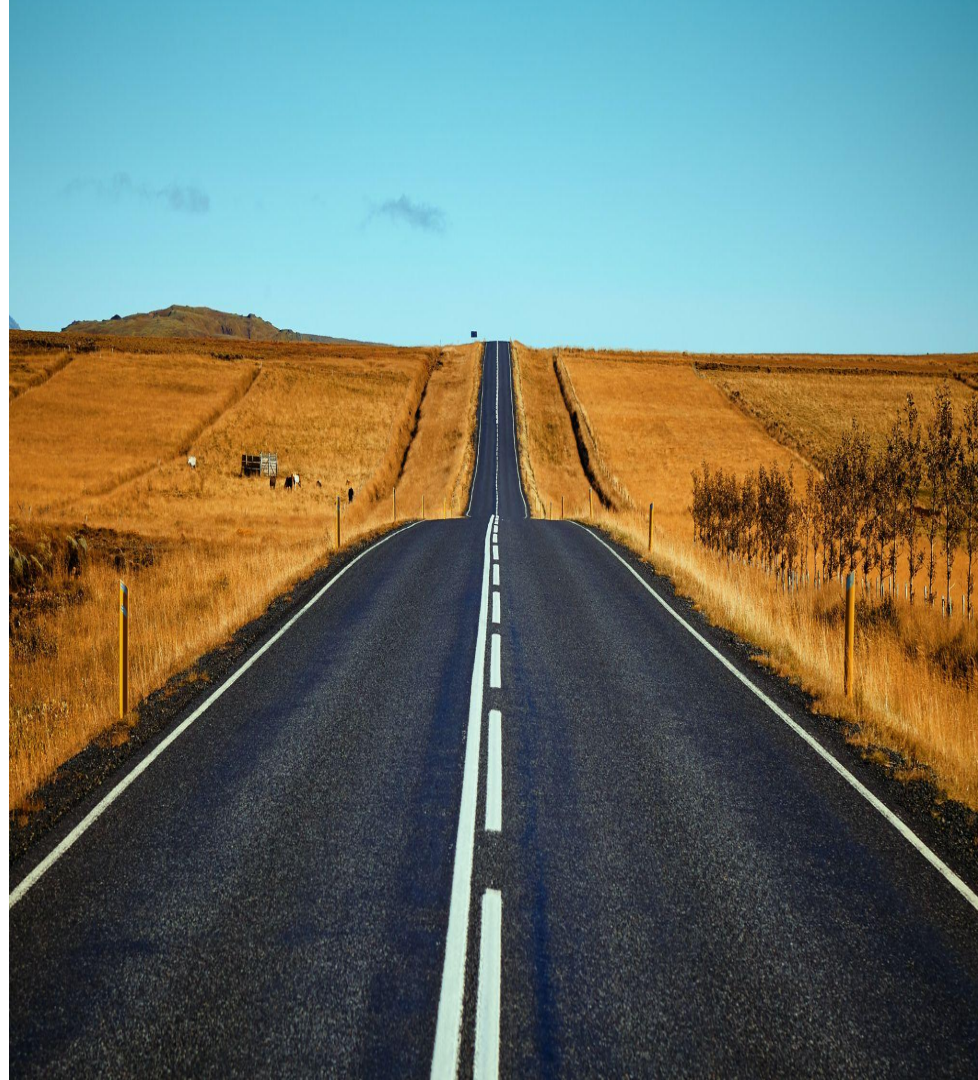
THINK: How can collaboration deepen and expand our work in Whole Child Health & Wellness?

WRITE: Please take 2 - minutes to document your response.

SHARE: In your breakout room please take 2- minutes to introduce yourself: (Name, Organization, & Location) and your heart-minded response.

Agenda

- ❖ Welcome, Community Building & Agenda Review
- ❖ Exploring CA's Golden Opportunity
- ❖ Panel - Moving Differently: Integrating California's Diverse Resources to Support Whole Children and Families
- ❖ Break (7 min.)
- ❖ Our Whole Child Health & Wellness Journey & Partnership with the CA Youth Opioid Response Initiative
- ❖ A Look Ahead: Supporting Local Communities with Whole Child Health & Wellness
- ❖ Next Steps & Closing



Our Golden Opportunity

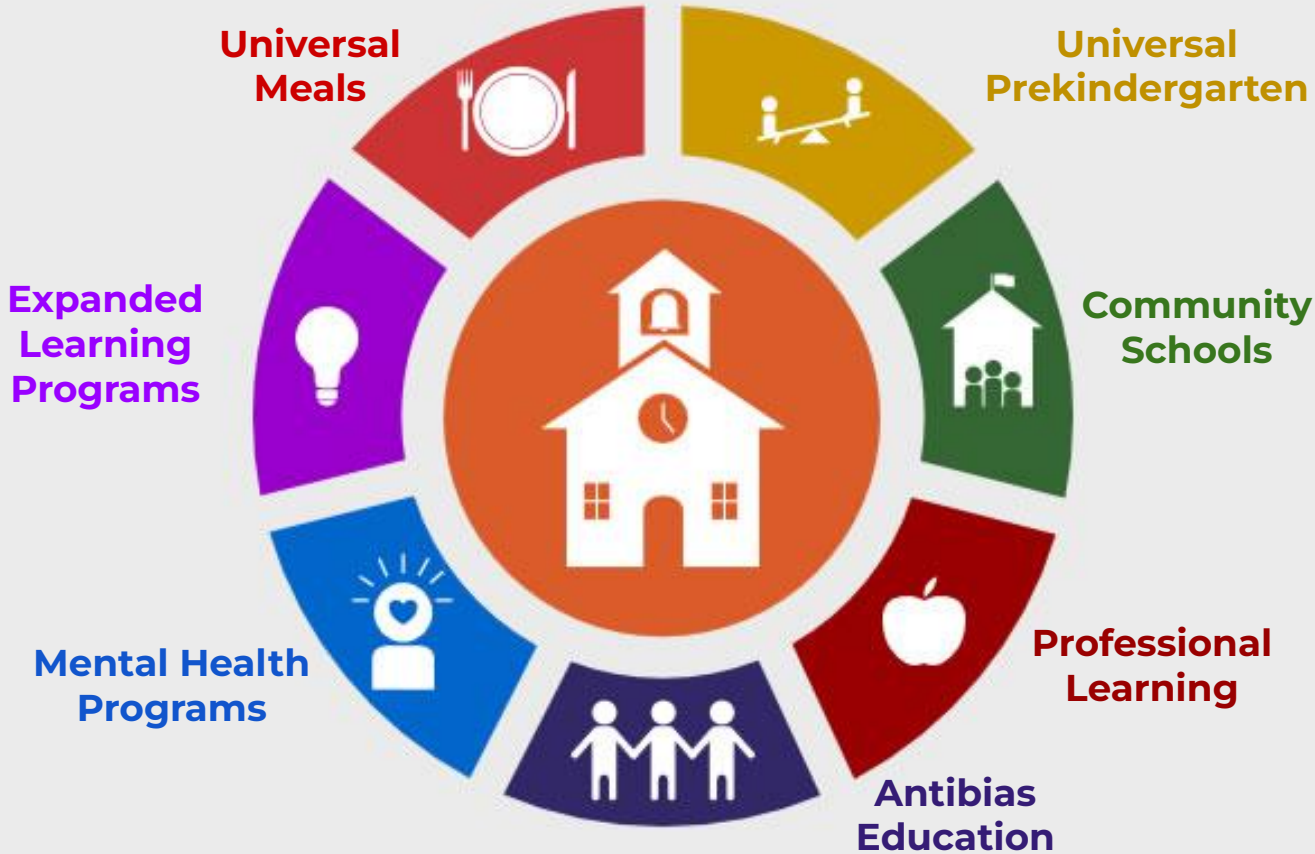


California AfterSchool Network

CONNECT. CONVENE. INSPIRE.



Transforming Schools Initiative



SCAN ME



What is Expanded Learning?

Ed Code:

8482.1. For purposes of this article, Article 19 (commencing with Section 8420), and Article 22.6 (commencing with Section 8484.7), the following definitions shall apply:

(a) “Expanded learning” means before school, after school, summer, or intersession learning programs that focus on developing the academic, social, emotional, and physical needs and interests of pupils through hands-on, engaging learning experiences. It is the intent of the Legislature that expanded learning programs are pupil-centered, results driven, include community partners, and complement, but do not replicate, learning activities in the regular schoolday and school year.

What does it mean?

“Expanded learning means before school, after school, summer, or intersession learning programs that focus on developing the academic, social, emotional, and physical needs and interests of pupils through hands-on, engaging learning experiences. It is the intent of the Legislature that all Expanded Learning programs are pupil-centered, results-driven, include community partners, and complement, but do not replicate, learning activities in the regular school day and school year.”

- California Department of Education

Expanded Learning Ecosystem in CA

A map of California with numerous colored dots (green, yellow, blue, grey) scattered across the state, representing various expanded learning locations. The dots are more densely clustered in the Central Valley and Southern California regions.

California Department of Education Expanded Learning Division
Michael Funk, Director

System of Support for Expanded Learning
[16 County Offices of Education](#)
California AfterSchool Network
ASAPConnect

+ Additional external TA providers

(California School-Age Consortium, Partnership for Children and Youth, Temescal Associates)



Statement of Strategic Direction | MARCH 2021

Towards Equity-Driven Whole Child Health and Wellness

Developed by the **Whole Child Health and Wellness Collaborative**

The Whole Child Health and Wellness Collaborative was convened by the California AfterSchool Network with the generous support of Youth Opioid Response California.



CREATING CONDITIONS FOR THRIVING

Equity-Driven Planning and Implementation Framework



Shared Equity Strategies



Conditions for Thriving Children, Youth, Families, and Communities



Focus on Youth and Family



Support and Nurture Adult Workforce



Leverage New and Existing Resources



Collaborate Across Systems

Multi-sector coalitions, including California's Expanded Learning Programs, have the capacity to realize positive and equitable health and wellness outcomes for whole children, whole families, and whole communities

RESULTING IN:

Every child being well known, well cared for, and well prepared to thrive.

Download our One-Pager resource on CA's Golden Opportunity blog by Jeff Davis!

SCAN ME



Exploring CA's Golden Opportunity

- ★ What do you hope to walk away knowing, feeling, or inspired to take action on after today's Convening?

Add your responses to the Jamboard (linked in the chat) in slides 2-5



Panel:
Integrating
California's Diverse
Resources to
Support Whole
Children and
Families



CONNECT. CONVENE. INSPIRE.

**California's Golden Opportunity: Promoting Child & Community Wellness
Through Cross-Sector Expanded Learning Partnerships**

Friday, September 16, 2022

**Panel:
Integrating California's
Diverse Resources to
Support Whole Children
and Families**

Panelists

Hayin Kimner,
Community Schools Learning
Exchange (CSLX)

Lupita C. Alcalá,
WestEd

Sarah Neville-Morgan,
California Department of Education

Veronica Johnson
PHI Center for Health Leadership &
Impact





California Department of Education

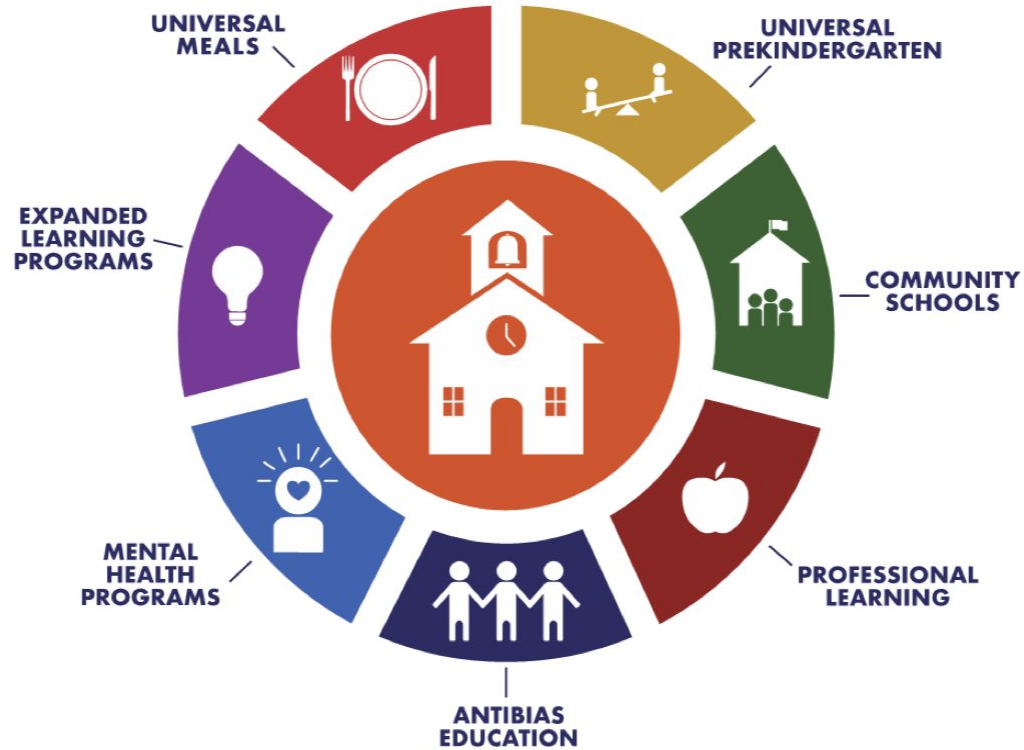


Sarah Neville-Morgan
Deputy Superintendent
Opportunities for All Branch

Multilingual Support Division
Expanded Learning Division
Early Learning Division
Nutrition Services Division
Special Education Division



TRANSFORMING CALIFORNIA SCHOOLS



A Field Guide for Creating Integrated, School- Based Systems of Care



Supporting California's Children Through a Whole Child Approach

A Field Guide for Creating Integrated,
School-Based Systems of Care

April 2022


























Coauthors include leaders across education, health, & social service sectors

- Breaking Barriers
- California AfterSchool Network
- California Alliance of Child and Family Services
- California School-Based Health Alliance
- High Expectations Parental Service
- Integrated Human Services Group
- Orange County Health Care Agency
- PACES Connection
- Partnership for Children & Youth
- Placer County Office of Education
- Policy Analysis for California Education
- Sacramento County Department of Health Services
- Santa Clara County Office of Education
- Trauma Transformed
- UC Davis Center for Reducing Health Disparities
- WestEd
- Yolo County Health and Human Services Agency



How initiatives can provide or increase access to opportunities for building local integrated, school-based systems of care

Provide/ Increase Access	ACES Aware Initiative	CYBHI	System of Care	Community Schools	Early Childhood Initiatives	Expanded Learning
 Professional development & training						
 Integrated workforce						
 Governing structures*						
 Partnerships & collaboration[†]	Build partnerships	Seed partnerships	Build partnerships	Seed partnerships	Build partnerships	Seed partnerships
 Services to students' families[†]	Not applicable	Infrastructure to provide services	Not applicable	Infrastructure to provide services	Time & space to deliver services	Time & space to deliver services

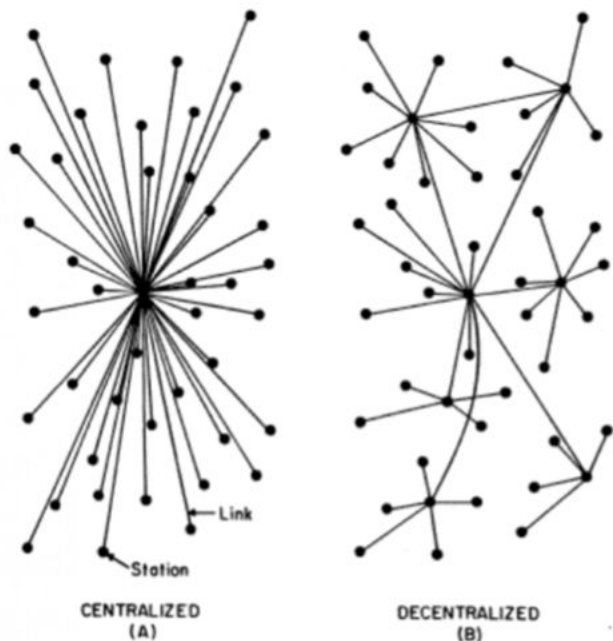


Expanded Learning and CYBHI

- Intend to serve California's most vulnerable students and families
- Promote physical, social, and emotional health of children and youth
- Build the infrastructure and service delivery of primary and secondary prevention strategies

Notable differences between sectors

Public education compared with health & human services agencies



- Public education largely reflects a decentralized structure—informed by historical development, democratic principles that emphasize local control (vested in school board authority), and system maturation over the past 50 years—that has been trending toward more centralized decision-making.
- In contrast, health and human services agencies are largely centralized for functions such as prioritization, strategy execution, funding deployment, governance, and accountability.



Schematic drawing of a Centralized and a Decentralized network (Courtesy of Rand)





The **California Overdose Prevention Network (COPN)** is a statewide learning community for all coalitions, organizations and individuals working to combat the overdose crisis in California.



Saving lives with multi-sector partnerships, strategies, & resources for overdose prevention



PREVENT
new addictions



MANAGE
pain safely



TREAT
addiction



STOP
overdose deaths



Low Hanging Fruit



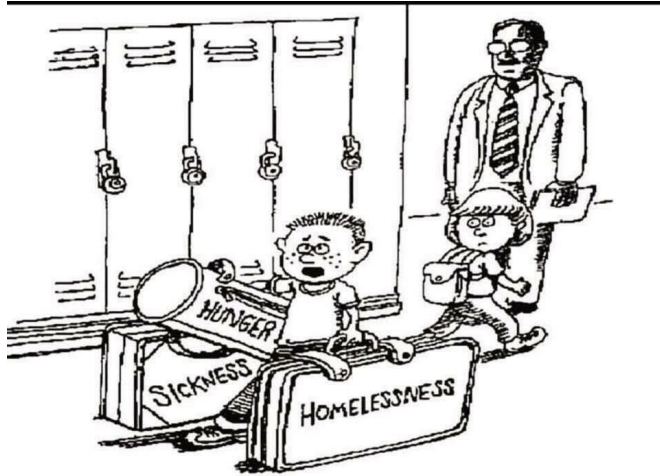


Thank you!
Let us know how we can
support your overdose
prevention efforts.

Contact us at
copn@healthleadership.org

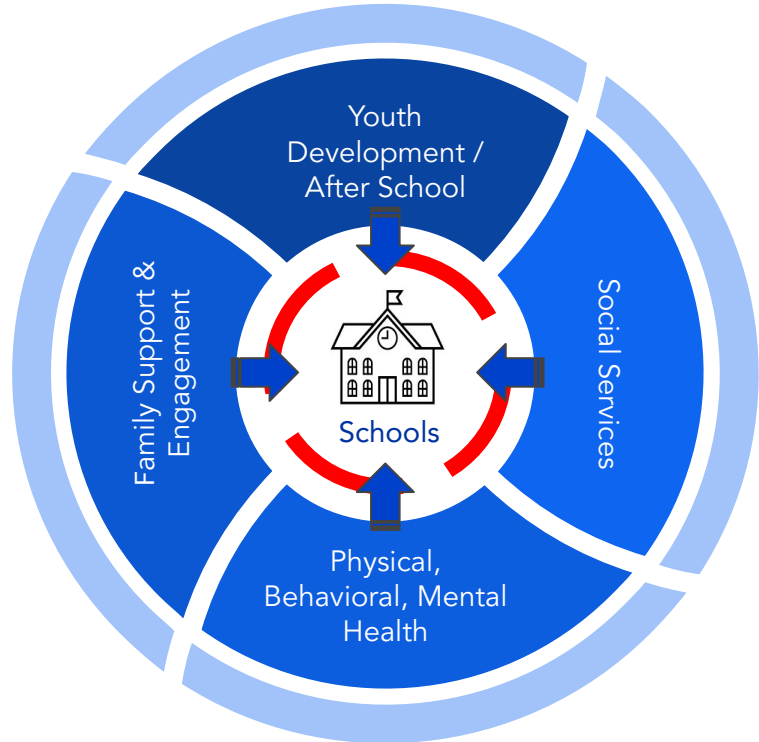
For more resources and to sign up
for our newsletter visit **copn.org**

Community Schools 1.0



***"Could someone help me with these?
I'm late for math class."***

Scott



CCSPP Framework: commitments, conditions, pillars

A “whole child,” whole **school improvement strategy**, where districts and their schools:

- work closely with teachers, students, and families, and
- *partner with community agencies and local government*

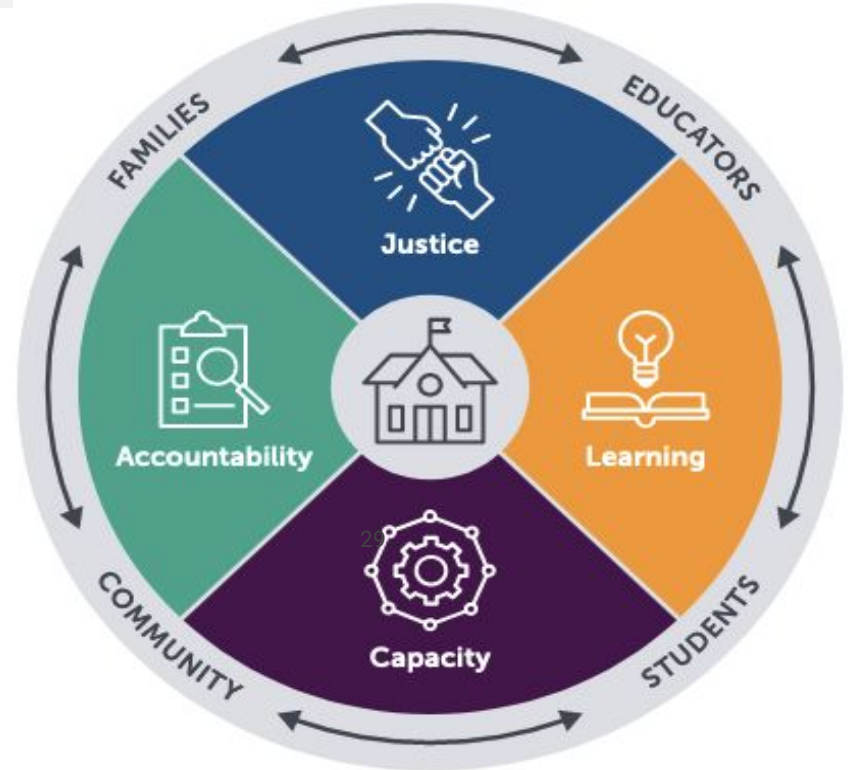
to **organize and align** community resources behind improving student outcomes.

***NOT a
collection of
co-located or
“wrap-around
“programs &
services***

- wise CSLX editorial

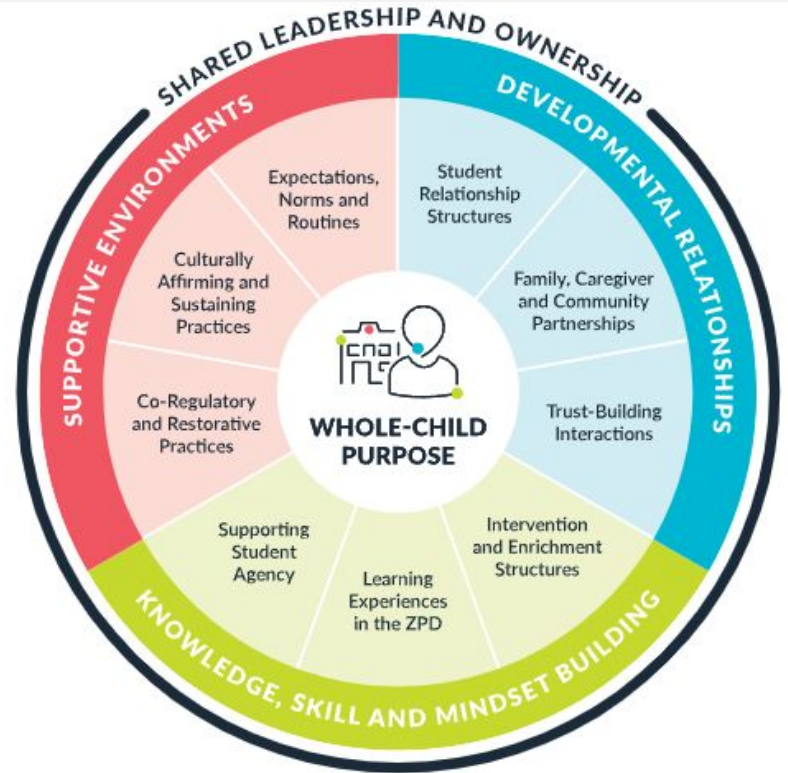
CCSPP Cornerstone Commitments

- Assets-Driven and **Strength-Based** Practice
- **Racially Just** and Restorative School Climates:
- Powerful, Culturally Proficient and Relevant **Instruction**
- Commitment to **Shared Decision Making** and Participatory Practices



CCSPP Conditions for Learning

- **Supportive environmental** conditions that foster **strong relationships**
- Productive **instructional strategies** that support motivation, competence, and self-directed learning
- SEL that fosters **skills, habits and mindsets** that enable academic progress
- **Systems of support** that enable healthy development, respond to student needs and address learning barriers



CCSPP “Pillars” aka Implementation Themes

Family & Student Relationships

- Families and students are **essential partners**, not just “clients” or occasional stakeholders
- **Youth voice, choice, and leadership**

Collaborative Leadership & Staff

- **Shared leadership** to mobilize action and responsibility
- **Dedicated staff** to ensure alignment and coordination

Student-Centered Learning

- **Inclusive & responsive learning:** all students are seen, valued, & supported to be successful learners
- **Partners strengthen, extend, and deepen student learning**

Integrated Student & Teacher Supports

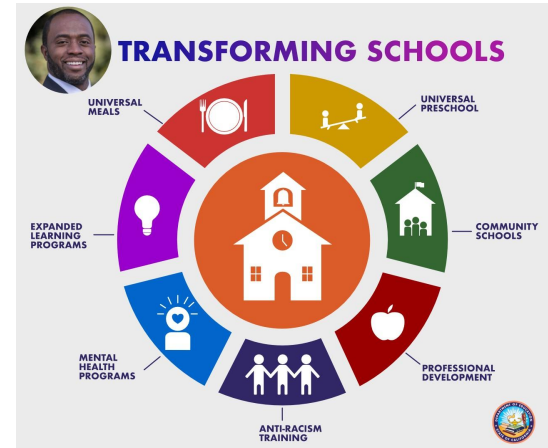
- **Proactive & responsive** to holistic needs of students and staff
- **Strategic partnerships** to expand resources and capacity

Coherence



And... (FYs '21 & '22)

- Expanded Learning Opportunities (\$4B, one time & ongoing)
- Universal Transitional Kindergarten (\$3.3B, one-time & ongoing)
- Educator Effectiveness Block Grant (\$1.5B, one time)
- Continuing MTSS or MTSS expansion (\$82M)
- Mental Health Student Supports Act (MHSSA) & Child & Youth Behavioral Initiative (\$4.7B, one-time)
- Universal School Meals program (reimbursement increase by \$54M, then \$650M)
- LCAP (increased funding rate for concentration factors) (\$4.3B)
- Expand family empowerment centers (\$7M)



Moving Differently to Support Whole Children and Families

- ★ What **F**EEELINGS are coming to heart?
- ★ What images **(T**HOUGHTS/**Q**UESTIONS) are coming to mind?
- ★ What **A**CTIONS are being cultivated within?

Add your responses to the Jamboard
(linked in the chat) in slides 5-7.





Time for
a BREAK

Our Whole Child Health & Wellness Journey & Partnership with the CA Youth Opioid Response Initiative



California AfterSchool Network

CONNECT. CONVENE. INSPIRE.

California Expanded Learning programs

- Pre-COVID:
 - 4,500 sites
 - 900,000
- We now have a Golden Opportunity with a nearly universal Expanded Learning program funded at \$4 billion.

California's Expanded Learning Programs Demonstrate Results

Research supports the need for, and effectiveness of, Expanded Learning programs. Beyond research, programs have conducted their own local evaluations. Below is a small sample of the impacts taking place across California's 11 County Superintendents Educational Services Association (CSESAs) regions. This snapshot only begins to scratch the surface of the positive impacts of Expanded Learning programs.



Journey in Whole Child Health & Wellness



Whole Child Health & Wellness Community of Practice

- Local Lead Partners:
 - Christina Sepulveda, Boys & Girls Clubs of Garden Grove
 - Dr. Marie Pinto, ProYouth
- Partners:
 - Dr. Sue Nelson, Consultant
 - Fred Jones, Expanded Learning Solutions
 - Rosa Guzman, Glen Price Group
 - Jenny Hicks & Vanessa Hernandez, JVH Empower

Crisis: Youth & Fentanyl

Opioid Related Deaths Among Youth



	2018 Total	2018 Percent of Deaths	2018 Rate/ 100,000 persons	2020 Total	2020 Percent of Deaths	2020 Rate/ 100,000 persons
10- to 14-year-olds	1	0.0%	0.04	12	0.2%	0.48
15- to 19-year-olds	53	2.2%	2.08	257	4.8%	10.14
20- to 24-year-olds	176	7.2%	6.49	580	10.8%	22.0
10- to 24-year-olds	230	9.5%	8.49	849	15.8%	
All ages	2428	100%	5.82	5563	100%	



Source: <https://skylab.cdph.ca.gov/ODDdash/>



HEALTH MANAGEMENT ASSOCIATES



CALIFORNIA

Teen girl dead from fentanyl-laced pills at Hollywood school is latest in rash of student overdoses



The answer:

“Harm reduction and prevention efforts, and access to narcan is the answer to address this crisis of overdose deaths.”

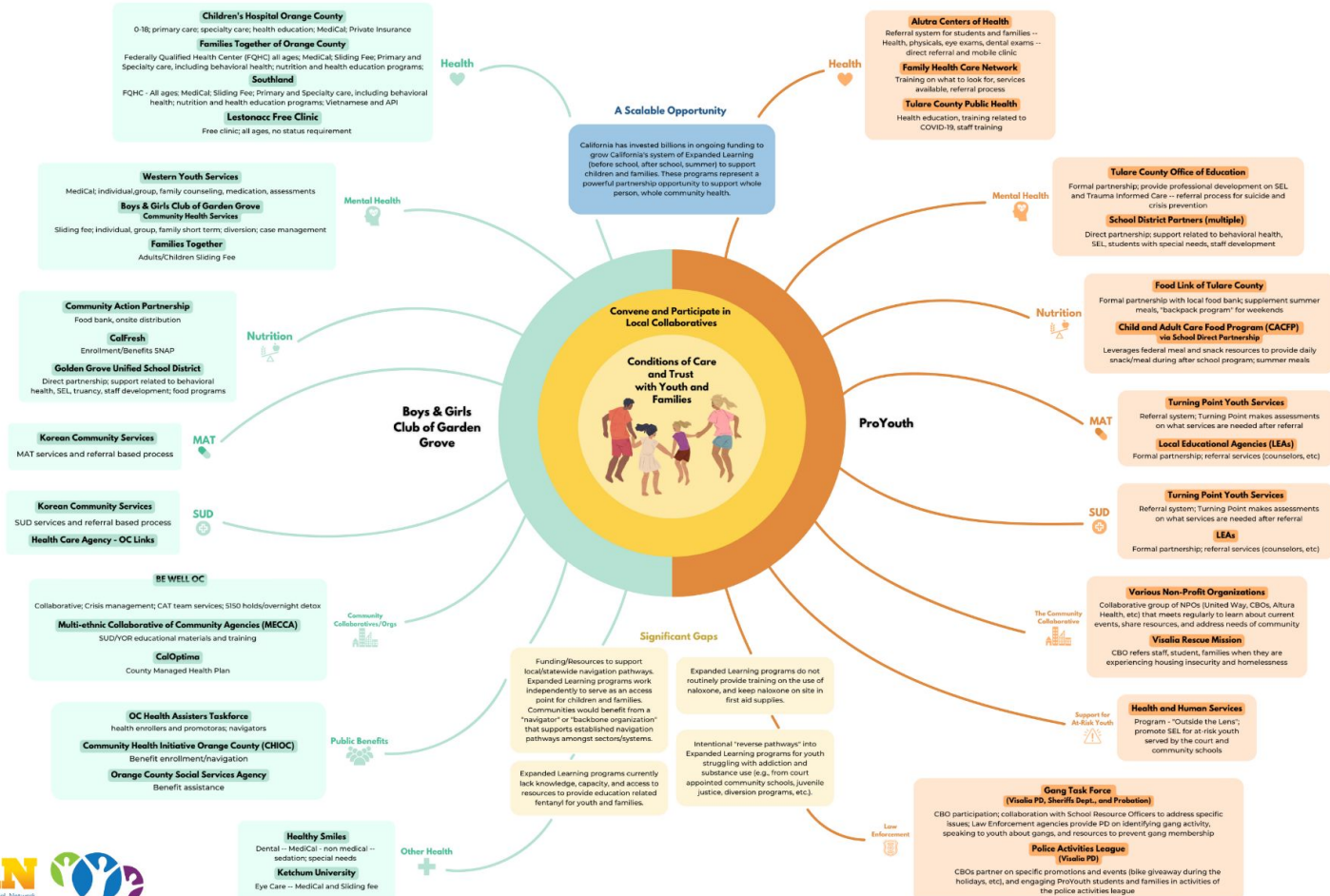
NEWS

California middle school employee overdoses after student brings fentanyl to school

by: Miabelle Salzano
 Posted: Sep 13, 2022 / 03:14 PM PDT
 Updated: Sep 13, 2022 / 03:15 PM PDT



Expanded Learning Navigation Pathways Support Whole Child Health and Wellness





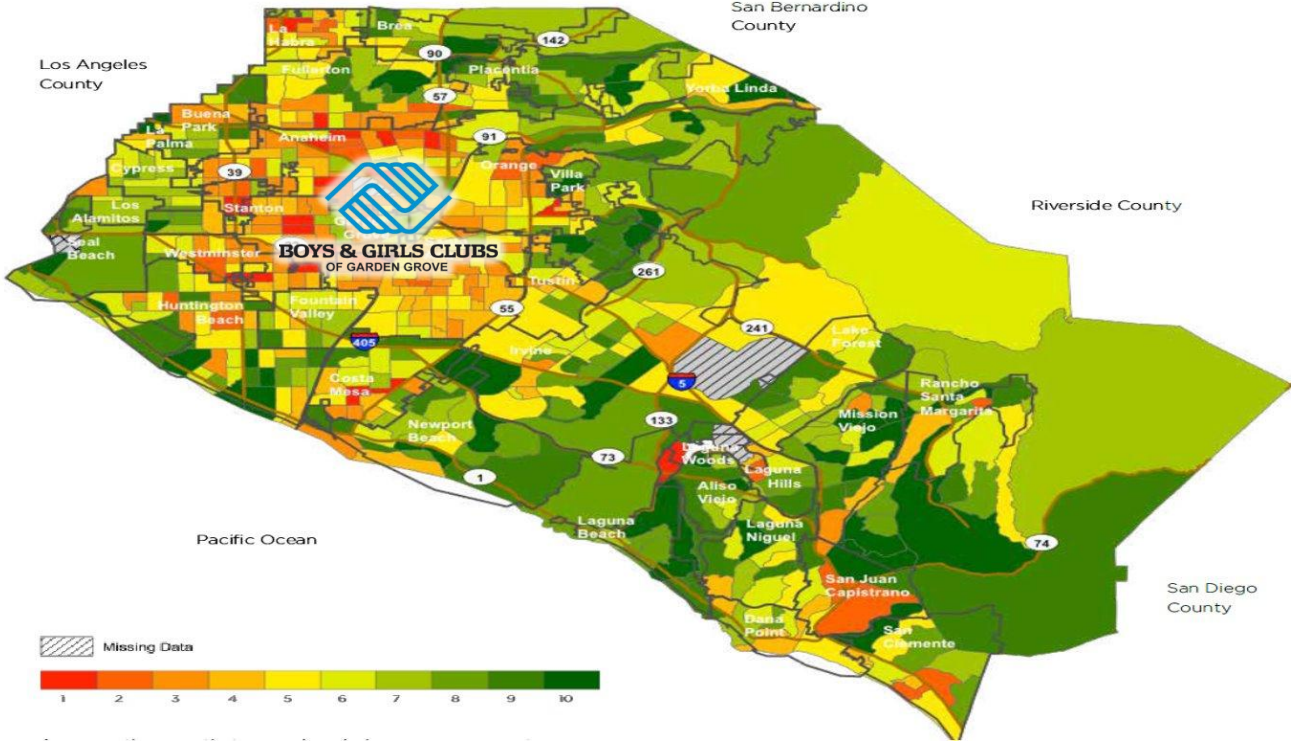
BOYS & GIRLS CLUBS
OF GARDEN GROVE

Christina Sepulveda
Vice President, Community Impact

BGCCG serves over 5,000 youth daily in expanded learning programs at over 60 sites in Central Orange County. BGCCG is committed to the whole child and building strong family foundations thru Early Childhood Programs and Community Health Services.



BGCGG - Orange County



Challenges and Opportunities

- ★ Beliefs NIMBY
- ★ How to Talk About Opioids/SUD
- ★ Little knowledge on MAT or providers

Charges Filed in Largest Orange County Drug Bust in 16 Years – Buena Park pair arrested with enough fentanyl to kill 4.7 Million People; more than 800 pounds of meth and nearly 190 pounds of cocaine taken off the street by the Buena Park Police Department

April 6, 2022

Opioids crisis

Killed by a pill bought on social media: the counterfeit drugs poisoning US teens

Accidental deaths soar among young people amid a proliferation of fentanyl-filled pharmaceuticals sold on platforms such as Snapchat and Instagram

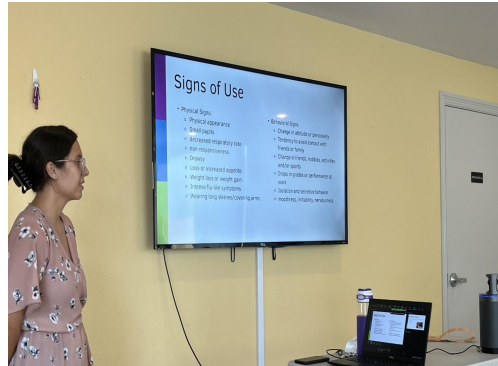
- ★ Partnering with Existing Collaborations
- ★ Sharing Resources
- ★ EXL Protective Factors

CALIFORNIA

4 deaths possibly tied to fentanyl reported in Anaheim in 3 separate overdose cases

Next Steps and Takeaways

- ❖ Education and Awareness
- ❖ Double Impact - Staff and Youth
- ❖ First-Aid and Narcan Training
- ❖ Narcan Distribution
- ❖ Reverse Pathways for SUD youth
- ❖ Seamless Referrals





Dr. Marie Pinto, CEO

ProYouth is a non-profit Expanded Learning organization serving approximately 5,000 students, in 10 districts, on nearly 50 sites in Tulare County.



California AfterSchool Network

CONNECT. CONVENE. INSPIRE.

ProYouth - Tulare County

1. ProYouth envisions a multi-agency collaborative system, that would include Expanded Learning agencies, that would facilitate in educating, navigating and supporting families through the process.
2. The challenges ProYouth faces stem from being a rural community with limited resources.
 - Survey data shows, our families encounter greater challenges with basic needs, such as food, housing, small child care, and employment over substance abuse and mental health.
 - Specifically on SUD and mental health, there is a lack of education. Most families, treat both as a medical issue, consulting a clinic physician versus seeking treatment alternatives.
3. Through our partnerships and collaborations with our local agencies ProYouth has been able to educate families and refer resources where gaps exist.

Next Steps and Takeaways

- ❖ Education and Awareness
- ❖ Seamless Referrals/Warm Hand-off
- ❖ Continue to build partnership through Community Care Coalition.
- ❖ Continue to provide resources to families.



Our Whole Child Health & Wellness Journey and Partnership with the CA Youth Opioid Response Initiative

- ★ What **F**EEELINGS are coming to heart?
- ★ What images **(T**HOUGHTS/**Q**UESTIONS) are coming to mind?
- ★ What **A**CTIONS are being cultivated within?

Add your responses to the Jamboard (linked in the chat) in slides 8-14.



Lessons Learned

Rosa Guzman, MA
Associate



Glen Price Group

Lessons Documented in Resource Guide

What's in it?

- **The Opportunity**
 - **Community of Practice**
 - What was done in practice
 - Lessons learned
 - **Developing Pathways to Services**
 - Best Practices
 - Challenges and Policy barriers
 - **A Vision Forward**
 - Opportunities for the field
 - **A wealth of resources**
-

Resource Guide Preview - Shared Equity Strategies Explored

- Building Multi-Sector Collaboration
 - **Challenges:** *A lack of understanding of what different organizations can bring to the table, lack of shared language, commitment, and structure, and resource and information sharing among various organizations*
- Navigation Pathways, Co-Location of Services
 - **Challenge:** *The lack of 'navigators' to help guide expanded learning programs, youth, and families through the various complex systems to access services.*
- Pathways to Substance Use Disorder (SUD) services and Medication-assisted treatment (MAT)
 - **Challenge:** *many expanded learning programs lack awareness or access to resources or educational materials about substance abuse, prevention, and treatment options from trusted sources that can be shared with youth and families.*

Opportunities for the Field

- Create pathways from treatment to expanded learning programs
- Create stronger integration of other technical assistance strategies
- Multi-sector collaboration model as a way to address other system challenges
- Sustainability opportunities



Resource Guide:

The purpose is not only to share the learnings and process from the local community partners and what was learned, but also to provide background and context, resources, examples from the field, and actionable steps to developing multi-sector collaborations and pathways for youth and families to have access to quality substance use prevention and treatment programs



**Coming
Winter 2022!**

A Look Ahead



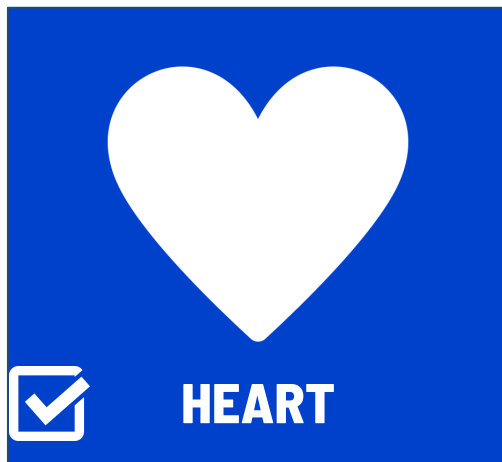
California AfterSchool Network

CONNECT. CONVENE. INSPIRE.

Looking Ahead: Inquiry Questions for **Collective Action**



1. What THOUGHTS or IDEAS do you have that **CAN** deepen & expand this Golden Opportunity?



2. What is INSPIRING you or getting you EXCITED about this Golden Opportunity?



3. What ACTIONS, RESOURCES, or SUPPORT **CAN** you provide to deepen and expand this Golden Opportunity?

*Thank you to our Partners, Whole Child Health & Wellness
Community of Practice, and Planning Team!*



BOYS & GIRLS CLUBS
OF GARDEN GROVE



J.V.H. Empower



California AfterSchool Network

CONNECT. CONVENE. INSPIRE.



Glen Price Group



POWEROFUS

2022 WORKFORCE SURVEY

Calling All Youth Serving Professionals!

We see YOU.
We celebrate YOU.
We want to know
YOUR story.



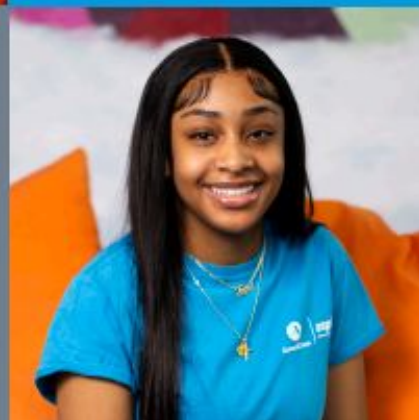
Take the survey.



powerofussurvey.org



We know the
power of YOU
is power
for YOUTH.





TWITTER

@ca_afterschool



YOUTUBE

/California
AfterSchool
Network



FACEBOOK

/California
AfterSchool



INSTAGRAM

@caafterschool
network



LINKEDIN

/ca-afterschool-
network



CONNECT. CONVENE. INSPIRE.

Follow us on
social media!