

ELO-P Nuts & Bolts

September 20, 2023

- ★ *Sterling Williams*
- ★ *Heather Williams*
- ★ *Tiffany Gipson*



CONNECT. CONVENE. INSPIRE.



What We're Doing Today

- Introductions & The Plan for Today
- What is Expanded Learning? (*and how it's funded*)
- ELO-P Basics
- Hot Topics
- Resources
- Closing, Transition to Regional Breakouts



Today's Learning Structure

- Engage in the Chat - share ideas, thoughts, resources, promising practices.
- Capture Personal Reflections in a copy of this [Google Doc](#).
- Join the Facilitated Regional Breakout at the end.



Questions to Consider

- What stands out from this session? Take note of key phrases and quotes.
- What is inspiring you?
- How does this impact how you think about your work and/or your role?
- What are strategies from today that you might implement within your own Expanded Learning Program?



Opportunities to Get More Granular

- Review the [CDE FAQ's](#)
- Join [Office Hours](#)
- Reach out to the CDE Help Desk: expandedlearning@cde.ca.gov
- Engage with the [System of Support](#) Regional Teams
- Watch [Fireside Chats](#)



What is Expanded Learning?

CAN

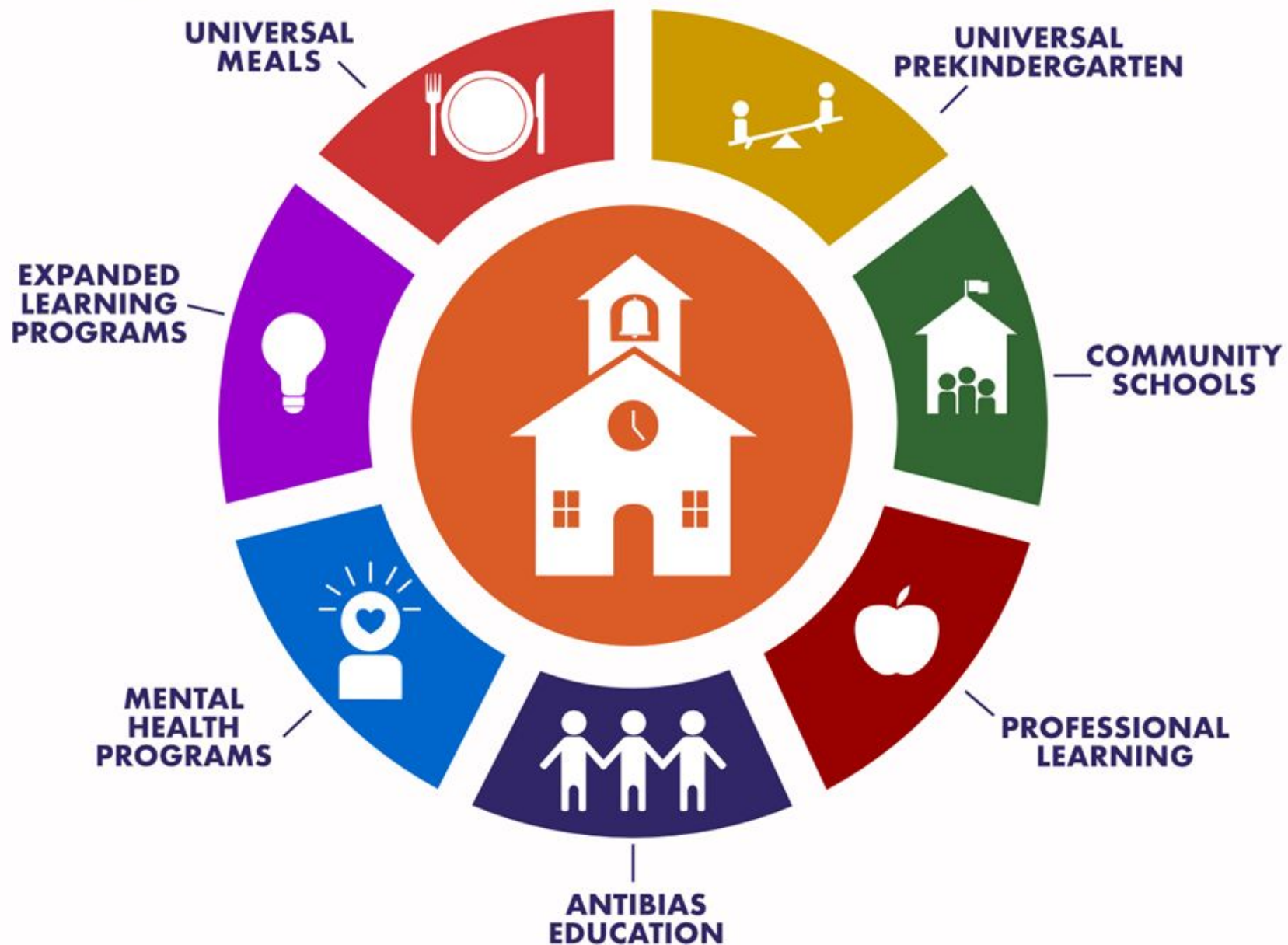
California AfterSchool Network

CONNECT. CONVENE. INSPIRE.





TRANSFORMING CALIFORNIA SCHOOLS

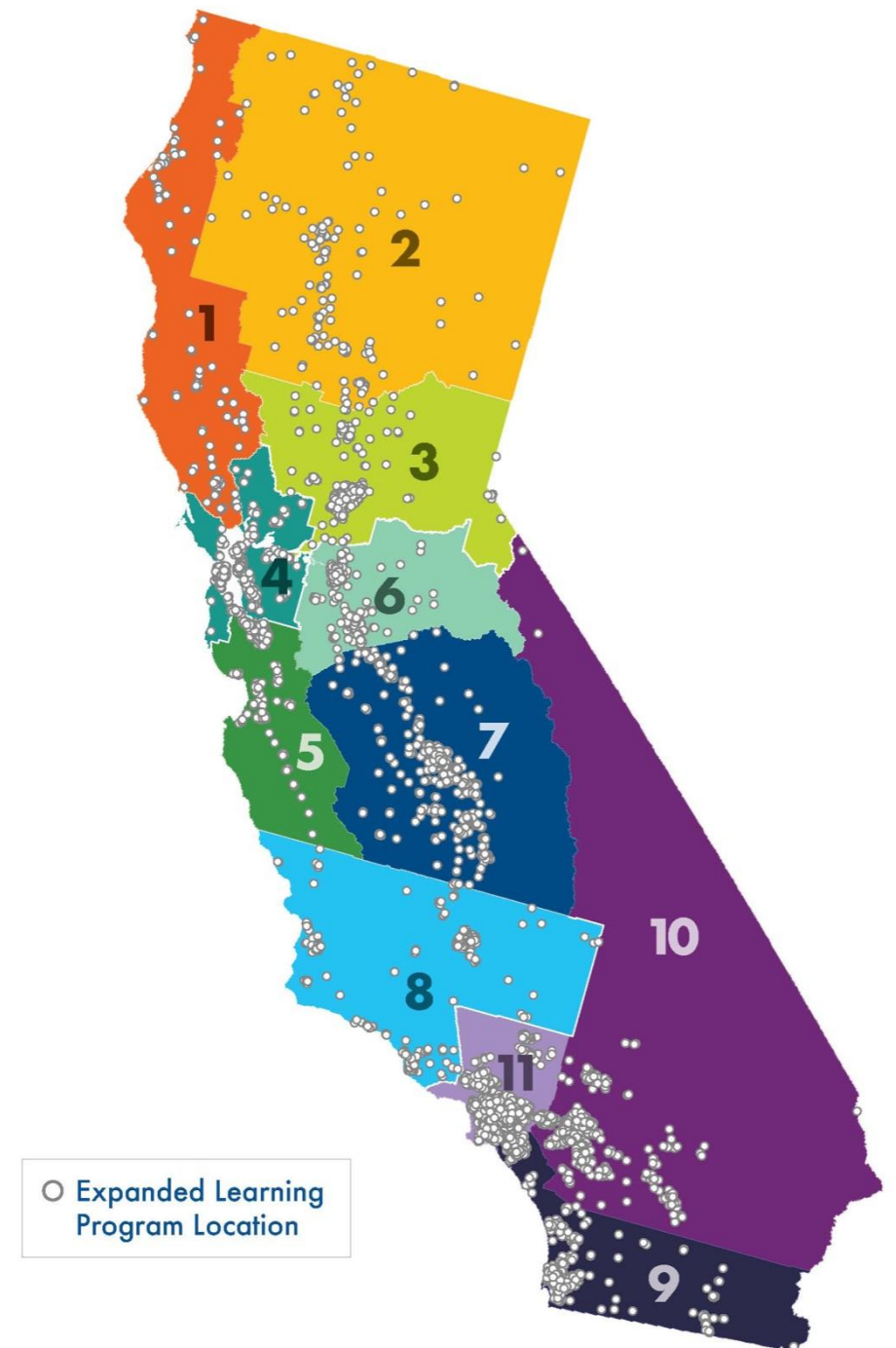


California's Programs

VISION:

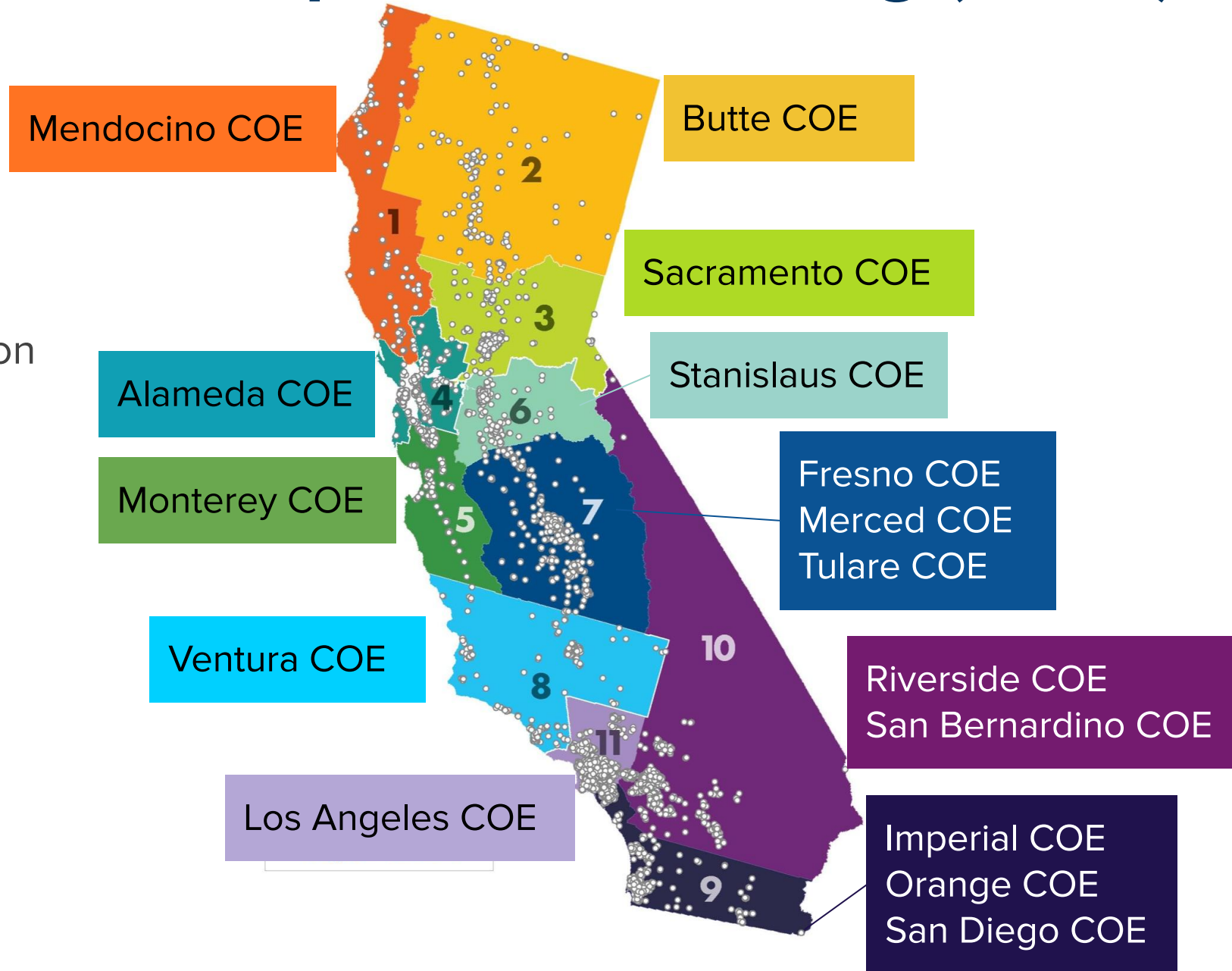
Expanded Learning Programs are an integral part of young people's education, engaging them in year-round learning opportunities that prepare them for college, career, and life.

Pre-Pandemic the state-funded After School Education and Safety (ASES) program and federally-funded 21st Community Learning Center (21st CCLC) program operated at over **4,500 sites with over 980,000 students** enrolled. The vast majority (85%) funded exclusively by the state.



System of Support for Expanded Learning (SSEL)

- CDE Expanded Learning Division
- 16 County Offices of Education
- California AfterSchool Network
- ASAPconnect
- SSEL STEAM Hubs



Expanded Learning Defined

In California Expanded Learning has a specific legal definition (EC 8482.1). Let's break down what the definition says:

WHEN?

Expanded Learning opportunities take place:

- before and after school,
- summer, and
- intersession



Expanded Learning Defined

WHAT?

Expanded Learning opportunities develop:

- academic,
- social,
- emotional, and
- physical needs and interests of students



Expanded Learning Defined

HOW?

Expanded Learning opportunities should be:

- hands-on,
- engaging,
- student-centered,
- results-driven,
- involve community partners, and
- complement learning activities in the regular school day and year

The Quality Standards for Expanded Learning in California

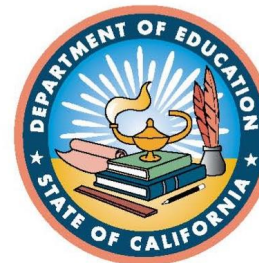
*High quality programs
create conditions that
support positive
developmental outcomes
consistent with the
Science of Learning and
Development.*



Quality Standards for Expanded Learning in California:
Creating and Implementing a Shared Vision of Quality

CONTENTS

INTRODUCTION / BACKGROUND	3
DESCRIPTION OF STANDARDS AND CROSSWALK	4
RECOMMENDED USES	5
QUALITY STANDARDS IN ACTION	6
SUMMARY OF WORK GROUP PROCESS	19
WORK GROUP PARTICIPANTS	20
GLOSSARY OF TERMS	21
REFERENCES	22



"This bold initiative provides a road map for improving expanded learning throughout California."

- Tom Torlakson
Superintendent of Public Instruction

FINAL RELEASE: SEPTEMBER 2014

Informed by Expanded Learning stakeholders and practitioners, and produced in collaboration between the California Department of Education, After School Division, and the California AfterSchool Network.

Types of Quality Standards



[Learn More: Expanded Learning in California: Quality Standards](#)

Point-of-Service

- Safe and Supportive Environment
- Active and Engaged Learning
- Skill Building
- Youth Voice and Leadership
- Healthy Choices and Behaviors
- Diversity, Access, and Equity

Programmatic

- Quality Staff
- Clear Vision, Mission, Purpose
- Collaborative Partnership
- Continuous Quality Improvement
- Program Management
- Sustainability

The top right corner of the slide features a decorative graphic consisting of several overlapping triangles and squares in shades of orange and yellow, creating a modern, abstract design.

How is it funded?

Expanded Learning Funding Sources

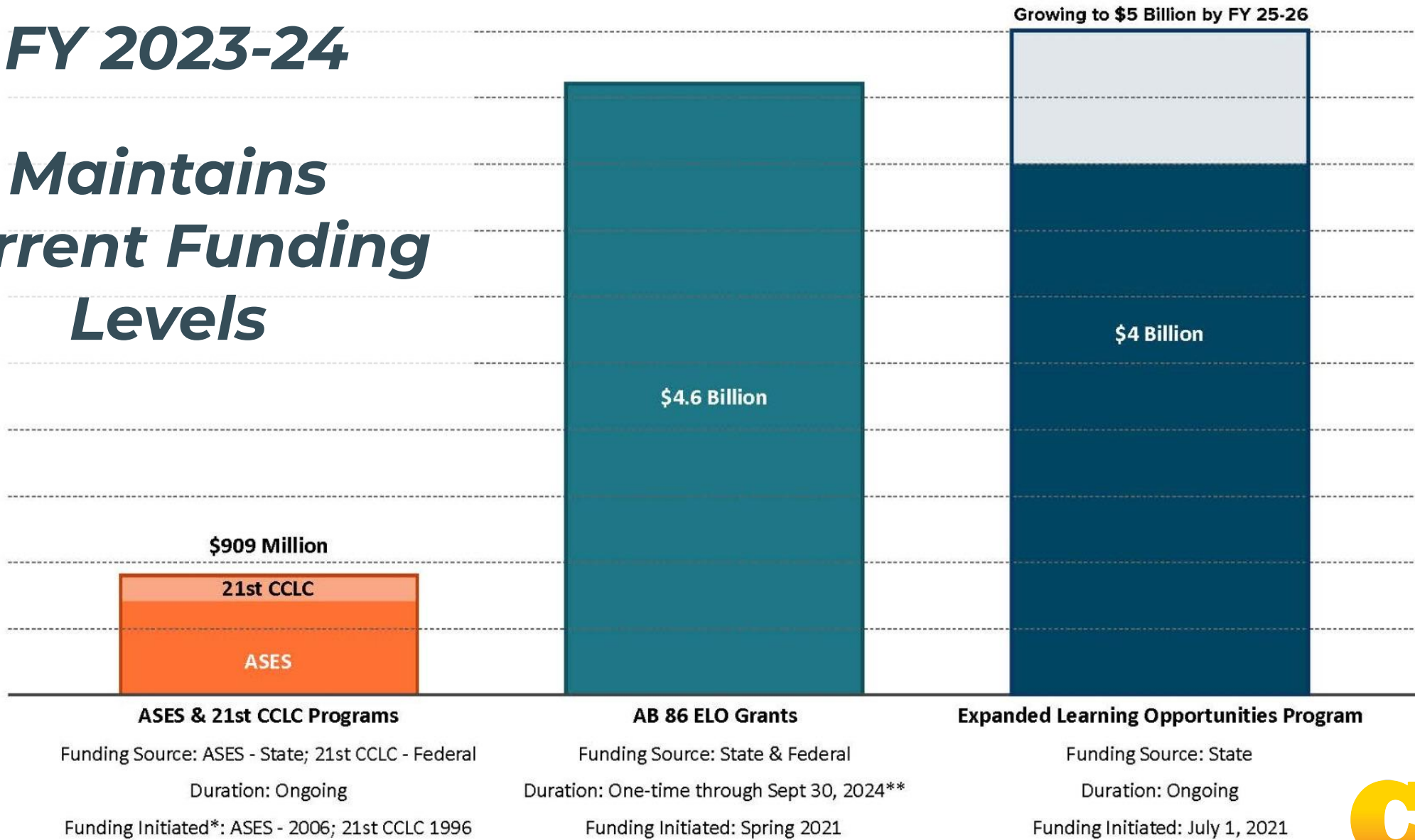
Name	Source	Duration	Grades	Determination	Recipient	Ed Code
After School Education and Safety Program (ASES)	State	Ongoing	TK-8	Competitive Application	School Based Awards	8482 - 8484.65
Expanded Learning Opportunities Program (ELO-P) <i>Result of AB 130, later amended by AB 181</i>	State	Ongoing	TK-6*	Formula Based Apportionments	LEA Based Awards, <i>Site Distribution is locally determined</i>	46120
21st Century Community Learning Centers (21st CCLC) Elementary/Middle	Federal	Ongoing	TK-8	Competitive Application	Site Based Awards	8484.7 - 8484.9
21st CCLC Afterschool and Enrichment for Teens Program (ASSETs)	Federal	Ongoing	9-12	Competitive Application	Site Based Awards	8420 - 8428
Expanded Learning Opportunity Grant (ELO-G) <i>Result of AB 86 Funding (COVID Relief)</i>	Federal & State	One Time <i>Expires 2023/2024</i>	TK-12	Formula Based Apportionments	LEA Based Awards	43520 - 43525



**Funding is apportioned to districts that serve TK-6 students. Once districts meet the minimum requirements they can offer programming to students in other grades.*

FY 2023-24

Maintains Current Funding Levels



ASES & 21st CCLC Programs

Funding Source: ASES - State; 21st CCLC - Federal

Duration: Ongoing

Funding Initiated*: ASES - 2006; 21st CCLC 1996

AB 86 ELO Grants

Funding Source: State & Federal

Duration: One-time through Sept 30, 2024**

Funding Initiated: Spring 2021

Expanded Learning Opportunities Program

Funding Source: State

Duration: Ongoing

Funding Initiated: July 1, 2021

**Initiated refers to the first year that funding was released. Programs were created in earlier legislation and ASES evolved out of an earlier state-funded after school program established in 1998.*

***Funded through 2 state resource codes and 4 federal resource codes with different expenditure dates and reporting requirements. Can be utilized Expanded Learning supports as well as other learning recovery strategies.*



California AfterSchool Network

CONNECT. CONVENE. INSPIRE.

Let's Reflect

- What Quality Standards are you already focused on?
Which ones might you focus on this year or next year?
- What funding sources do you currently leverage to support Expanded Learning opportunities? Could you leverage others?



ELO-P Basics



California AfterSchool Network

CONNECT. CONVENE. INSPIRE.



The Intent of ELO-P

ELO-P Funding Ensures All Districts* Provide Expanded Learning

LEA's (local educational agencies) benefit from **billions of dollars** in funding to holistically support students before school, after school, and during summer/non-school days.

This unprecedented funding allocation goes to ALL LEAs* that serve students in grades TK-6 to ensure that all students in California have equal access to comprehensive and transformative Expanded Learning opportunities.

[California Education Code Section 46120](#)



ELO-P Key Details

- Announced in Governor Newsom's May Budget Revise (May 2021)
- Establishes a new **ONGOING** funding source for Expanded Learning programs
- ASES, 21st CCLC Elementary/Middle School, and the ELO-P should be considered a **single, comprehensive program**
- The intent is to offer all students access to Expanded Learning programs, prioritizing unduplicated students

Unduplicated Pupils

*A pupil enrolled in a school district or a charter school who is classified as an **English learner, FRPM eligible** (eligible for free or reduced-price meal), or is a **foster youth.***

Program Elements

Similar to ASES/21st CCLC, programs should have the following two elements:

- An **educational and literacy element** in which tutoring or homework assistance is provided in one or more of the following areas: language arts, mathematics, history and social science, computer training, or science.
- An **educational enrichment element** that may include, but is not limited to, fine arts, career technical education, recreation, physical fitness, and prevention activities.

Snacks and/or meals must be provided.



Days & Hours of Operation

- All School Days, In-Person
 - before and/or after school
 - no less than Nine Hours (Core Day + Expanded Learning Hours = 9 Hours)
- Non-School Days, In-Person
 - at least 30 Days
 - no less than Nine Hours
 - Inclusive of extended school year days and Saturdays
- In-Person: Students have to be in-person, but programming can be provided in a variety of formats
- Attendance is based on the individual needs of students and family

Frontier Exceptions

For programs located in a frontier designated geographical location*:

- Program requirements are **no less than eight hours** of combined instructional time, recess, meals, and in-person before or after school expanded learning opportunities per instructional day.
- **No less than eight hours** of in-person expanded learning opportunities on at least 30 non-school days, during intersessional periods.

**Frontier designated geographic location means a school site in an area that has a population density of less than 11 persons per square mile.*



Student Eligibility & Fees

- Every student is eligible to participate
- Fees: Cannot charge homeless youth, foster youth, students eligible for Free & Reduced Price Meals.
 - Family fees should be on sliding scale, based on ability to pay.



Staffing Requirements

Staffing requirements for ELO-P match those of ASES, *except for the TK/K staffing ratio:*

- Staff Ratio of **20:1** except TK/K, which is **10:1**
- All staff who directly supervise students must meet a districts qualifications for an instructional aide (IA)
 - LEAs have the flexibility to revise their district policy.
 - LEAs can create an IA Classification and/or Exam to better measure the qualifications and competencies of Expanded Learning candidates.
 - *For Title I Districts IAs in Expanded Learning do not need to meet the Title I, IA requirements*

ELO-P Collaboration Expectations

To maximize ELO-P funding LEAs are encouraged to collaborate with:

- community based organizations (CBO's) and
- childcare providers
 - *especially those participating in state/federally subsidized programs (i.e. California State Preschool Program)*



ELO-P Funding Details

- Total ongoing program funding is **\$4 billion**.
 - *Funding is based off of an LEA's Average Daily Attendance (ADA) and Unduplicated Pupil Percentage (UPP)**
 - *Includes \$5 million to county offices of education to provide ELO-P technical assistance, evaluation, and training services to support program improvement.*
- For FY 22-23 Apportionment Details [Access the CDE Website](#)

Governor's Budget
FY 2023-2024

Reflects ongoing ELO-P Funding at \$4 Billion

Program Plan

- Considered a living document
- Based on 11 of the 12 Quality Standards (*Sustainability is not included*)
- Review and update every three (3) years
- Work collaboratively with partners (*community partners/CBOs, parents, youth, etc.*) and staff to develop and review
- Needs to be approved by an LEA's Governing Board in a public meeting and posted on the LEA's website



Compliance & Monitoring

Commencing with FY 2023-24, LEAs are subject to Program Auditing and Federal Program Monitoring review.



Let's Reflect

- Where are you currently at in terms of implementing an Expanded Learning Program?
- How might you partner with members of your community to build out your program?



Hot Topics



CONNECT. CONVENE. INSPIRE.



Let's Chat About Some Common Questions...

- Offer & Provide Access Requirements



Offer

“Offer” means to recruit, advertise, publicize, or solicit through culturally and linguistically effective and appropriate communication channels.



Provide Access

“Provide access,” means to enroll in the ELO-P.

If a parent or guardian has a signed ELO-P registration form and that form is on file, the student shall be considered enrolled in the ELO-P.



Provide Access - Transportation

For an LEA receiving an ELO-P apportionment, transportation shall be provided for any student who attends a school that is not operating an ELO-P to attend a location that is providing an ELO-P, and to return to their original location or another location that is established by the LEA.



2023-24 Requirements

LEA's with an UPP at or above 75% shall:

- **Offer to ALL students** in TK-6, access to ELO-Ps, and
- **Provide access to ANY student** whose parent or guardian requests their placement in a program.

2023-24 Requirements

LEA's with an UPP below 75% shall:

- **Offer to at least ALL UNDUPLICATED students** in TK-6, access to ELO-Ps, and
- **Provide access to ANY UNDUPLICATED student** whose parent or guardian requests their placement in a program.

Let's Chat About Some Common Questions...

- Offer & Provide Access Requirements
- Running One Comprehensive Program



One Comprehensive Program

- Student Groups
- Ratio
- Early Release Policy



One Comprehensive Program

Student Groups:

ASES & 21st CCLC Priority Enrollment

- Eligible for Free & Reduced Price Meals
- Foster Youth
- Homeless Youth

ELO-P Unduplicated Pupils

- Eligible for Free & Reduced Price Meals
- Foster Youth
- English Learner

Fees (applicable to ASES, 21st CCLC, & ELO-P)

- Cannot charge **homeless youth, foster youth, students eligible for Free & Reduced Price Meals.**
- Family fees should be on sliding scale, based on ability to pay.

One Comprehensive Program

- Student Groups
- Ratio
- Early Release Policy ([Updated Guidance from CDE](#))



Let's Reflect

- If you have multiple funding sources are you running one comprehensive program? If not, how might you shift to do so?
- What other funding initiatives and resources might you leverage to support your Expanded Learning programs?



Resources



Resources

- CDE FAQ's: www.cde.ca.gov/ls/ex/elofaq.asp - New FAQ's in the Works!
- [CDE ELO-P Webpage](#)
- CDE Help Desk: expandedlearning@cde.ca.gov
- [Quality Standards for Expanded Learning in California](#)
- [SSEL Contact Information](#)
- [CAN Contact Information](#)
- [Entitlements/Appportionments](#)
- [ELO-P Fireside Chats](#)