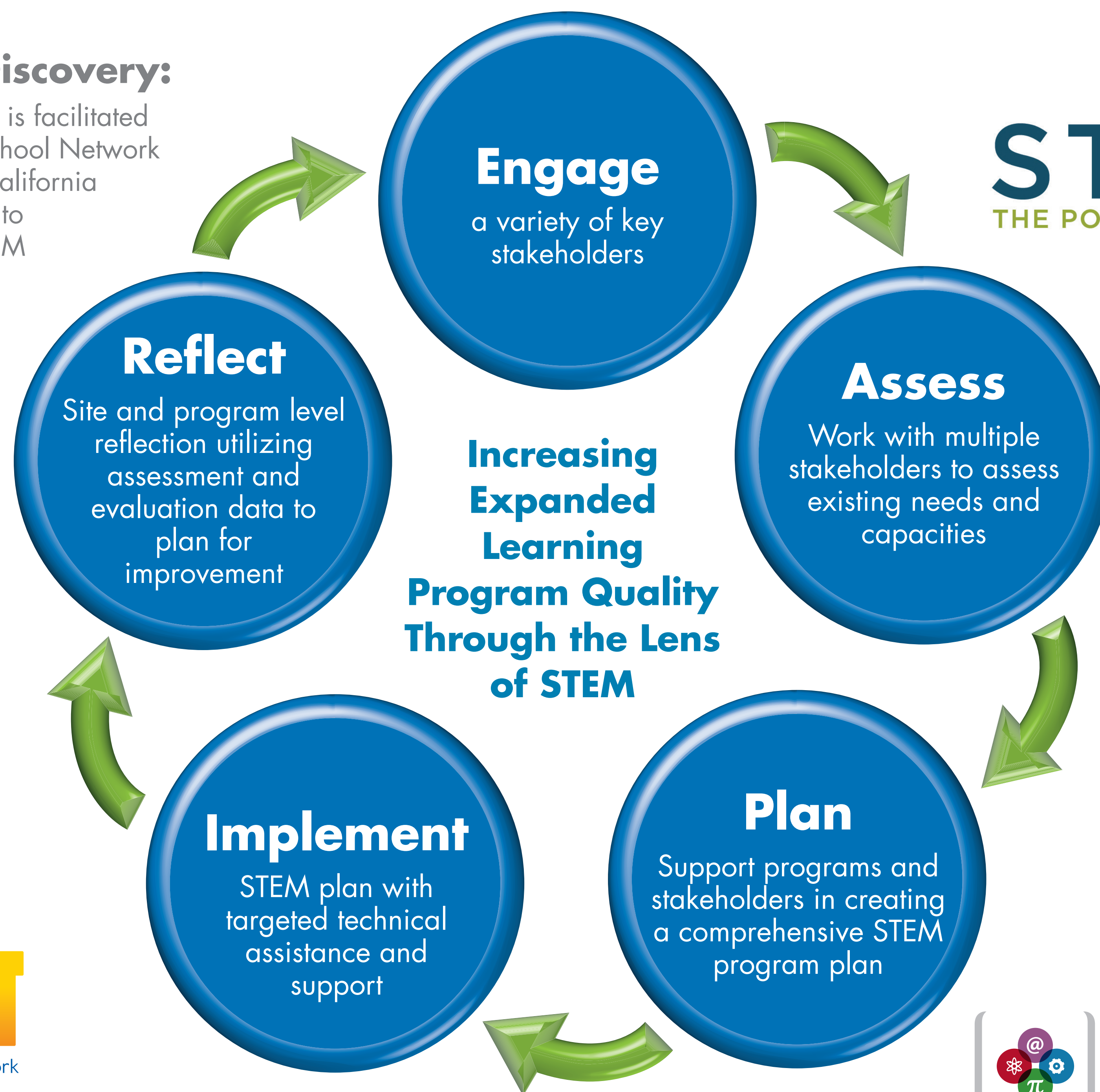


Power of Discovery: STEM²

The Power of Discovery: STEM² Initiative is facilitated by the California AfterSchool Network in partnership with the California STEM Learning Network to increase high-quality STEM learning opportunities to youth in expanded learning programs in nearly 20 California counties and growing.



CONNECT. CONVENE. INSPIRE.

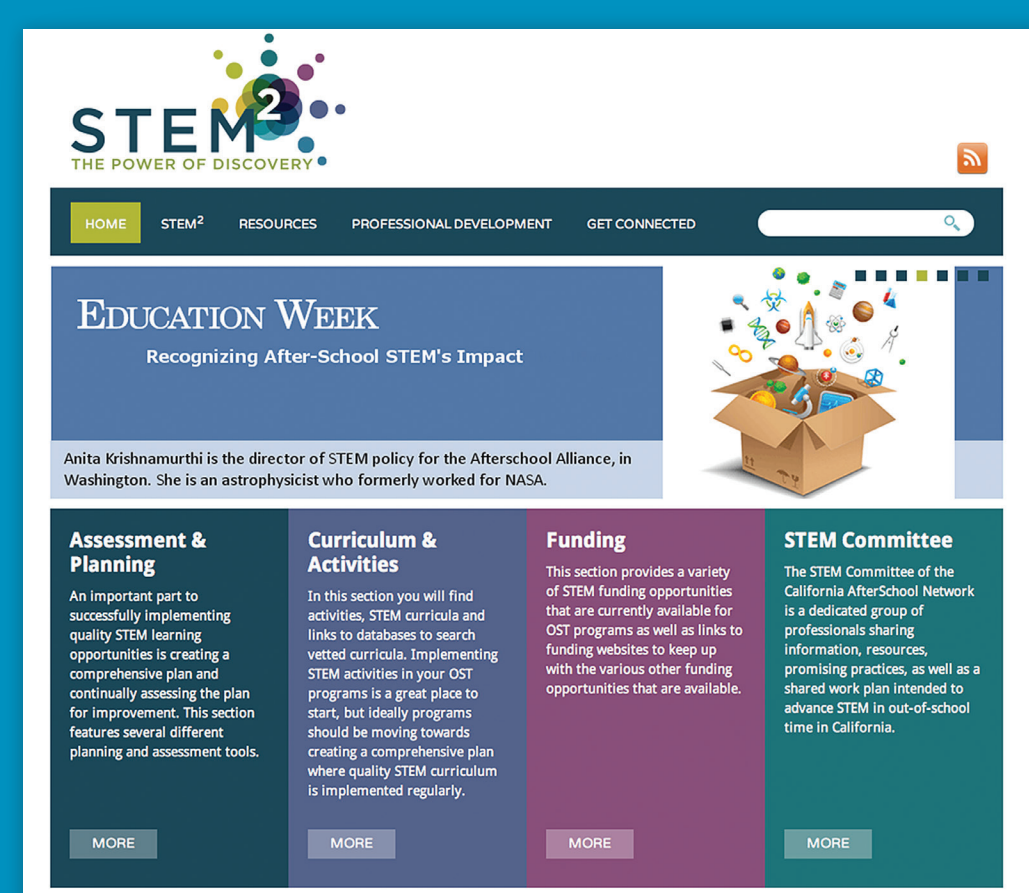


California STEM Learning Network
SCIENCE | TECHNOLOGY | ENGINEERING | MATHEMATICS

Powerofdiscovery.org

Virtual Innovation Support Center

- A virtual resource to support quality STEM learning in expanded learning programs.
- Field-driven, and field informed by the CAN STEM Committee, and Power of Discovery: STEM² Regional Innovation Support Providers.



Including:

- Expanded Learning STEM Assessment and Planning Tools
- Curriculum and Activities
- Funding Opportunities
- Professional Development Opportunities
- Inspirational and Informative Video Content
- Research, and much more!

Join the California AfterSchool Network's STEM Committee!

What is the STEM Committee?

The STEM Committee is a group of dedicated professionals sharing information, developing resources, promising practices, to advance STEM in expanded programs in California.

How does the STEM Committee operate?

Under the guidance of the Committee Co-Chairs, members carry out a shared work plan through subgroups of the Committee.

What's the commitment?

Members are expected to attend 7 out of 9 meetings a year and participate in at least one subgroup to help advance the work of the Committee.

How do I join?

Visit our website at powerofdiscovery.org to learn more about the STEM Committee and how to join!