

The Power of Discovery: STEM²

What does the Power of Discovery: STEM² mean for PARENTS?

The Power of Discovery: STEM² can help to make STEM learning a priority for California Schools by:

- Increasing quality STEM learning opportunities in expanded learning programs, and surrounding schools and community organizations with the resources, expertise, and assistance they need to transform STEM learning.
- Enhancing school-based STEM instruction and expand out of school STEM learning opportunities.
- Building a brighter future by keeping California at the forefront of technology and innovation.
- Helping young people develop the knowledge and skills they need to compete in the global marketplace.
- Making sure that students have the time and resources they need to study science and other STEM subjects.

What does the Power of Discovery: STEM² mean for BUSINESS AND INDUSTRY?

The Power of Discovery: STEM² offers business an effective and cohesive path to meaningful partnerships with schools after school organizations to strengthen STEM Learning and further workforce preparation.

Expanding STEM learning opportunities for students is critical to the future of California, because:

- Students have little access to quality learning opportunities in Science and other STEM fields.
- California ranks 47th in terms of students proficiency in science.
- Employers are unable to fill STEM jobs and demand in California is expected to grow by 19 percent to a total of 1.1 million STEM jobs by 2018.

Regional Innovation Support providers, include:

Sacramento County Office of Education

Sacramento County Office of Education
Phil Romig, Science Curriculum Specialist
promig@scoe.net, (916) 228-2275



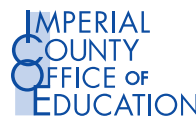
**Alameda County Office of Education and
The Gateways East Bay STEM Learning Network**
Bruce Simon, Associate Director
bruce.simon@csueastbay.edu, (510) 885-7319



**The Tech Museum of Innovation in partnership
with The Region 5 After School Partnerships**
Christina O'Guinn, Director of School and After School Partnerships
coguinn@thetech.org, (408) 795-6134



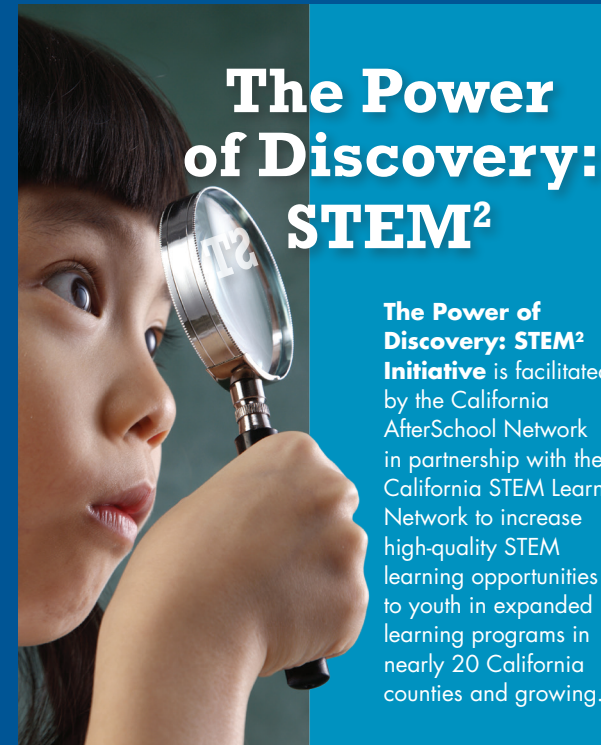
Orange County STEM Initiative
CynDee Zandes, Chief Program Officer
CZandes@thinktogether.org, (858) 5693141



**Region 9 Technical Assistance Center of San Diego
County Office of Education in Partnership
with the Imperial County Office of Education**
Darcy Lomeli, After School Program Specialist
darcy.lomeli@sdcoe.net, (858) 569-3141



CONNECT. CONVENE. INSPIRE.



The Power of Discovery: STEM²

The Power of Discovery: STEM² Initiative is facilitated by the California AfterSchool Network in partnership with the California STEM Learning Network to increase high-quality STEM learning opportunities to youth in expanded learning programs in nearly 20 California counties and growing.



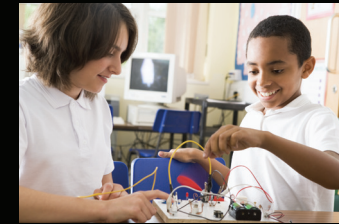
CONNECT. CONVENE. INSPIRE.

The Power of Discovery: STEM² is made possible with the generous support of the S.D. Bechtel, Jr. Foundation, the Noyce Foundation, the Samueli Foundation, and the Packard Foundation.

Powerofdiscovery.org

The Power of Discovery: STEM²

Powerofdiscovery.org



The Power of Discovery: STEM²

- **The initiative seeks to increase the quantity and quality of STEM learning opportunities for students** in expanded learning programs, and to surround schools and community organizations with the resources, expertise, and assistance they need to transform STEM learning.
- **Five Regional Innovation Support Providers** have been established to foster leadership, build effective partnerships, and provide other support needed to build the capacity of expanded learning programs. These Regional Innovation Support Providers engage over 600 expanded learning program sites in 25 counties in California. **A Virtual Innovation Support Center** (powerofdiscovery.org) has been established as a resource to support quality STEM learning opportunities throughout the entire state.
- **By building collaborative and effective partnerships** between schools and expanded learning organizations and by mobilizing a broad coalition of community partners with STEM expertise and resources, the Power of Discovery: STEM² enhances school-based STEM instruction and expand out of school STEM learning opportunities.
- The effort **fosters student excitement, curiosity, and interest in STEM learning**, and supports schools in partnership with expanded learning partners to apply the practices of the **Common Core and Next Generation Science Standards** for thousands of students.
- A nine-member **council provides oversight** for the initiative with representatives from public education, business, expanded learning, and higher education.

What does the Power of Discovery: STEM² mean for **K-12**?

The Power of Discovery: STEM² can help schools respond to parents and the public who strongly believe that STEM education should be a high priority, don't think students spend enough time on the STEM subjects and want them to have more. With K-12 leadership and support this effort can:

- Amplify and support the efforts of schools and teachers to enhance STEM Learning.
- Link schools with needed expertise and resources.
- Expand the learning day and increase opportunities for students (after school learning can add equivalent of 90 instructional days).
- The initiative can help school leaders to achieve commitments they have already made.
- Support efforts to further student understanding of Common Core and Next Generation Science Standards.
- Meet requirements for effective school/family/community partnerships.

What does the Power of Discovery: STEM² mean for **HIGHER EDUCATION**?

The Power of Discovery: STEM² offers Institutions of Higher Education (IHE) easier ways to work with schools and community based organizations (CBO). Expanded learning programs have a designated program director that can act as the liaison between IHE, CBOs, and school districts.

The Power of Discovery: STEM² offers new opportunities to strengthen teacher preparation programs. New teachers will have new opportunities for clinical practice in high quality after school STEM programs, helping them to develop confidence and competence in teaching STEM.

What does the Power of Discovery: STEM² mean for **COMMUNITY ORGANIZATIONS**?

The Power of Discovery: STEM²:

- Builds upon and creates new opportunities for community-based organizations to share content and expertise with schools and after school providers.
- Facilitates effective partnerships with schools and after school organizations.
- Increases student/parent exposure to and participation in community-based STEM learning opportunities.

What does the Power of Discovery: STEM² mean for **AFTER SCHOOL PROGRAM PROVIDERS**?

The effort mobilizes a broad coalition of community partners with STEM resources and expertise to engage and support California's students by providing guidance, training, and support for the development of high-quality STEM programs.

